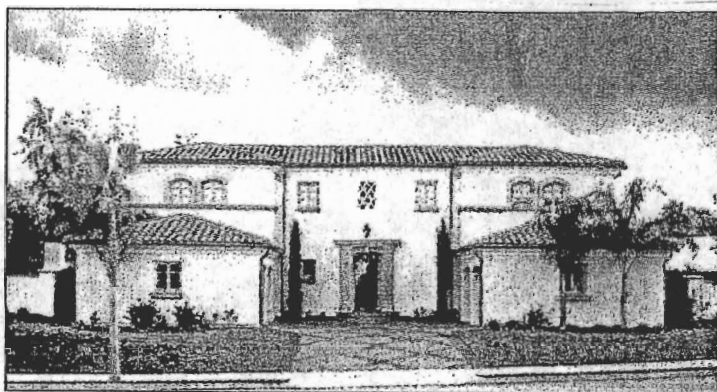


# NEW HOMES

SATURDAY, APRIL 13, 2002



Elegant MonteVerde embodies elegant living with historical interior finishes in new manor homes

## MONTEVERDE ARCHITECT DISCUSSES HISTORICAL IMPRINTS AT MONTEVERDE

The majestic gated manor homes of MonteVerde in Tarzana are where history and originality merge in the creation of a stately new neighborhood. MonteVerde's Spanish Revival architecture is characterized by simplicity and elegance, and the superlative homes' sense of authenticity evokes the distinction of a bygone era with attention to detail that is unrivaled in contemporary estate communities.

Critical to the creation of the impressive MonteVerde homes, was the engagement of John Andrews as the designing architect, as well as Santa Barbara-based architect Robert P. Senn as a consultant to the project. Senn was retained for his knowledge of and expertise in early Southern California archi-

■	BEDROOMS: 5 - 7
■	BATHS: 6 1/2 - 8 1/2
■	PRICES: FROM \$1,710,000

itecture, particularly the Spanish Revival movement, as exemplified by the prestigious estate homes he has designed in the Santa Barbara and Montecito areas.

"The Spanish Revival movement gave birth to some of the most exquisite and classic designs, which looked to Europe for historical roots and a sense of poetry and romance," says Senn. "The Spanish Revival movement was established in Southern California in the late 1910s and practiced through the

See MonteVerde, Page 2

## MONTEVERDE

Continued from Page 1

early 1930s. This style of architecture has survived as a testament to one of this country's most venerable eras of elegance and grace. The extraordinary homes of MonteVerde harken back to that timeless design."

"A crucial element of Spanish Revival architecture is its sense of mass, which is captured at MonteVerde with exterior walls that measure 14" thick at a minimum," notes Senn. "MonteVerde also stays true to the movement by its selection of French casement windows with true divided lites, meaning each pane is a separate piece of glass, an elegant and rare feature in modern homes. The windows and doors are all wood and highlighted with forged old-world hardware to give the homes a true European feel."

MonteVerde homes are a part of history, located within the foothills of the Santa Monica Mountains, adjacent to the El Caballero Country Club, and within the estate of famed writer Edgar Rice Burroughs. The single- and two-story homes feature five to seven bedrooms with six-and-a-half to eight-and-a-half baths, and are offered from \$1,710,000. Square footage ranges from 5,170 to 6,550. Each estate is on a pool-sized lot with the possibility to uniquely customize the interior space if purchased early. Buyers who purchase a home at MonteVerde will receive a golf membership to an exclusive country club (subject to membership

approval).

Each incomparably appointed MonteVerde home includes standard features such as built-in security and fire sprinkler systems, balconies with terra cotta tile, hand-troweled plaster exteriors, elegantly designed wrought iron railings and balusters, and three- and four-zone forced air heating and air conditioning. Also incorporated, structured wiring for home computer networks, in addition to prewiring for cable television, satellites, music systems and phone intercoms.

The kitchens are lavishly designed with center islands with vegetable sinks, walk-in pantries, wood clad built-in oven hoods, top-of-the-line appliances including built-in refrigerators, commercial oven ranges and dishwashers, and custom-wood cabinetry. The elegant master bedroom suites include entertainment niches, master retreat areas and balconies, stone flooring, luxurious spa baths with stone slabs surrounding, separate stone showers with benches, and expansive walk-in closets.

MonteVerde is located at 18400 Tarzana Drive, in Tarzana. To visit the community, take the 101 Fwy. to the Reseda Blvd. exit and head south to Tarzana Drive and turn left. Proceed east to the gated entrance at Avenida Oriente.

The MonteVerde sales office is open from 10 am to 5 pm daily. For more information call the MonteVerde sales team, at 818-996-7200 or visit the web for a virtual tour at [www.monteverdehomes.com](http://www.monteverdehomes.com).

Los Angeles Times  
April 13, 2002

“Senn was retained for his knowledge of and expertise in early Southern California architecture, particularly the Spanish Revival movement, as exemplified by the prestigious estate homes he has designed in the Santa Barbara and Montecito areas.”

Robert Senn

“The Spanish Revival movement gave birth to some of the most exquisite and classic designs, which looked to Europe for historical roots and a sense of poetry and romance.”

“A crucial element of Spanish Revival architecture is its sense of mass...”

Robert Senn